

## Topology software PROscan® Active V2

### Funktion

The **PROscan® Active V2** software enables the user at any time to record and display an actual topology plan of a PROFINET/ Ethernet network incl. all important device information. Subsequently this information can be edited and printed in a clear summary. It is also possible to simply save the information as Topo/PDF/CSV data. By using a compare scan all topology changes will be illustrated in traffic light colours. The software also offers an optimised touch panel designed to be used on HMI & Panel PC's.

Due to multiple licenses the user is able to install the software at various machines and can therefore demonstrate multiple network structures. This ensures that the current topology and the current network data can be recorded and displayed at each machine.

PROscan® Active V2 provides the user with following information, which is of high importance for the network maintenance and troubleshooting's:

- Detection of the real network structure (topology)
- Device information
  - PROFINET name
  - IP/MAC address
  - Hardware/Software version
  - Device type/name
  - Order number
- Line information
  - Line length
  - Power budget (POF)
- Port Overview
  - Discards
  - Errors

### New features

- New diagnostic mode with transparent statistics
- Comparison of hardware/software versions, with a warning if a deviation is found
- Transparent acceptance report as check list ("Fulfilled"/"Not fulfilled"), with own company logo
- Multi-topology: Several topologies can be opened at the same time
- Significantly faster network scan with minimum network load
- Simplified editing::
  - Software helps to correctly arrange devices
  - Port numbers for the created connections are editable
  - All changes can be undone

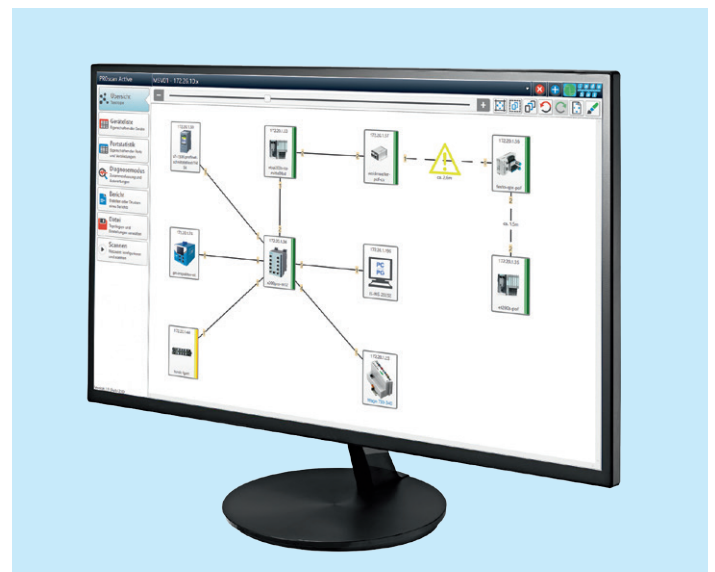
### Interacting with PROFINET-INspektor® NT

#### PROFINET DiagnoseDUO:

In case that a PROFINET INspektor® NT is located within the network, all determined quality parameters will automatically be assigned to the devices and the corresponding status will be graphically displayed in traffic light colours.

### System requirements

- Operating system:
  - Microsoft® Windows® Vista, 7, 8, 10
  - Microsoft® Windows® Server 2008, 2012, 2016
- Hardware requirements
  - Intel Atom 800MHz or more
  - 1GB RAM or more
  - Min. 400MB hard disk space



Topology software PROscan® Active V2

Network Category	Active	Device Type (IP Address)	Subnet	Gateway	MAC Address	Device Name	HW-Version	SW-Version	Notes	Device Type Name	Order Number	Vendor ID	Device ID	Controller	Health/Status
Settings	OK	192.168.1.1	192.168.1.0/24	192.168.1.1	08:00:27:00:00:00	SWITCH	1	1.0		SWITCH	116521	116521	116521	116521	OK
Layer 1 Configuration	OK	192.168.1.2	192.168.1.0/24	192.168.1.2	08:00:27:00:00:01	SWITCH	1	1.0		SWITCH	116522	116522	116522	116522	OK

Device list

Network Category	Number	Connected	Link Type	Length	Send power budget	Receive power budget	Connector	ISO/IEC 61875-2	Outwards	Inwards	Outwards	Inwards	Check Resistance (Ω)	Current (mA)
Settings	1	OK	Copper	10m	100mW	100mW	RJ45	100BASE-TX	0	0	0	0	100Ω	100mA
Layer 1 Configuration	2	OK	Copper	10m	100mW	100mW	RJ45	100BASE-TX	0	0	0	0	100Ω	100mA

Port Statistic

Device Statistics		Connection Statistics		IP Statistics		Version Statistic	
Device Type Name	Order Number	SW Version	HW Version	Device Count			
Euchner MGB	116521	V3.24.0	4	5			
	116523	V3.24.0	4	2			
Festo CPX-Terminal	TN 197330	V3.2.21	22	2			
HAHN RPT200	629320	V1.0.0	1	1			
IMI151-3	6E57 151-3BA23-0AB0	V7.0.5	8	26			
MIBCOMMPN	MIBCOMMPN	P3.2.24	1	1			

Version Statistic

Ordering details	Art. No.
Upgrade from PROscan® Active V1 to V2	117000052
PROscan® Active V2 – Basic License	117000053
PROscan® Active V2 – 5 Licenses	117000057
PROscan® Active V2 – 25 Licenses	117000061

Further licences on request!